



CannaBusiness Laboratories, LLC

2554 Palumbo Dr. Lexington, KY 40509

Certificate of Analysis

Customer:
Pharm CBD
2580 Highway 42 West
Bedford, KY 40006

Sample ID: **210203031**
Order Number: **CB210203009**
Sample Name: **21020-1**

Collected Date:
Received Date: **2/3/2021**
COA Released: **2/5/2021**

External Sample ID:
Batch Number: **21020**
Product Type: **Concentrate**
Sample Type: **Concentrate**

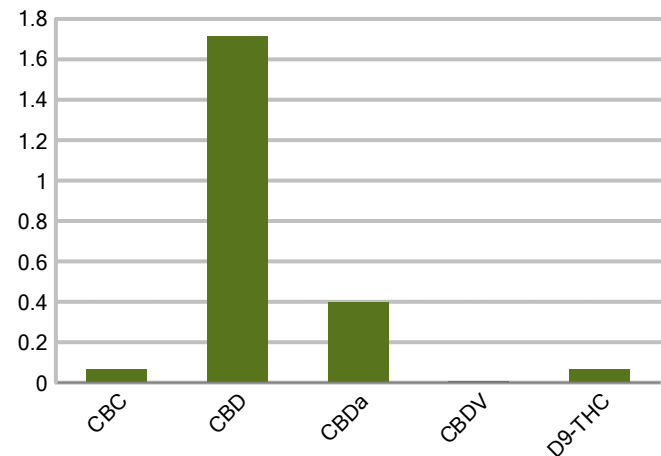
Comments: *d9-THC analysis performed by LCMS 8050*

CANNABINOID PROFILE

Analyte	LOQ (%)	% weight	mg/g
CBC	0.01	0.066	0.662
CBD	0.01	1.716	17.16
CBDa	0.01	0.400	4.003
CBDV	0.01	0.010	0.105
CBG	0.01	ND	ND
CBGa	0.01	ND	ND
CBN	0.01	ND	ND
d8-THC	0.01	ND	ND
d9-THC	0.01	0.066	0.665
THCa	0.01	ND	ND
Total Cannabinoids		2.259	22.59
Total Potential THC		0.066	0.660
Total Potential CBD		2.067	20.67
Total Potential CBG		N/A	N/A



Cannabinoids (% weight)



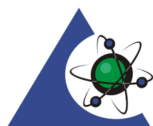
Ratio of Total Potential CBD to Total Potential THC 31.32 : 1

Ratio of Total Potential CBG to Total Potential THC N/A

**Total Cannabinoids refers to the sum of all cannabinoids detected.*

**Total Potential CBD = (0.877 x CBDa) + CBD. *Total Potential THC = (0.877 x THCa) + THC. *Total Potential CBG = (0.877 x CBGa) + CBG.*

**Total Potential THC/CBD are calculated to take into account the loss of an acid group during decarboxylation.*



PJLA
Testing
Accreditation #109588

Authorized Signature

Laboratory Manager

Jamie Hobgood

02/05/2021 1:27 PM

DATE

This product has been tested by CannaBusiness Laboratories using validated testing methodologies and a quality system. Values reported relate only to the product tested. CannaB Laboratories makes no claims as to the efficacy, safety, or other risks associated with any detected or non-detected levels of any compounds reported herein. This Certificate shall not be reproduced except in full, without the written permission of CannaBusiness Laboratories. Uncertainty information is available on request. Photo is of sample received by the lab in original packaging. The results apply to the sample as received. ISO/IEC 17025:2017 Accredited.



CannaBusiness Laboratories, LLC
2554 Palumbo Dr. Lexington, KY 40509



Sample ID: 210203031
Sample Name: 21020-1
Sample Type: Concentrate

Certificate of Analysis

Customer

Pharm CBD
2580 Highway 42 West
Bedford, KY 40006



Overall Batch Results

Pesticide N/A	Moisture Content N/A
Potency PASS	Water Activity N/A
Mycotoxins N/A	Heavy Metals N/A
Microbial Screen N/A	Residual Solvents N/A
Terpenoids N/A	

Sample Name: 21020-1
Sample ID: 210203031
Product Type: Concentrate
Sample Type: Concentrate
Collected Date:
Received Date: 02/03/2021
Batch Number: 21020
Batch Size:
Sample Size:
COA released: 02/05/2021 1:27 PM

Potency (mg/g)

Date Tested: 02/04/2021

Method:

Instrument:

0.066 % Total THC	2.067 % Total CBD	2.259 % Total Cannabinoids	22.59 mg/g Total Cannabinoids
----------------------	----------------------	-------------------------------	----------------------------------

Analyte	Result	Units	LOQ	Result	Units
CBC (Cannabichromene)	0.066	%	0.010	0.662	mg/g
CBD (Cannabidiol)	1.716	%	0.010	17.16	mg/g
CBDa (Cannabidiolic Acid)	0.400	%	0.010	4.003	mg/g
CBDV (Cannabidivarin)	0.010	%	0.010	0.105	mg/g
CBG (Cannabigerol)	ND	%	0.010	ND	mg/g
CBGa (Cannabigerolic Acid)	ND	%	0.010	ND	mg/g
CBN (Cannabinol)	ND	%	0.010	ND	mg/g
D8-THC (D8-Tetrahydrocannabinol)	ND	%	0.010	ND	mg/g
D9-THC (D9-Tetrahydrocannabinol)	0.066	%	0.010	0.665	mg/g
THCa (Tetrahydrocannabinolic Acid)	ND	%	0.010	ND	mg/g



Authorized Signature

Jamie Hobgood
Laboratory Manager

Jamie Hobgood

02/05/2021 1:27 PM

Date Time

NT = Not tested, ND = Not detected; LOQ = Limit of Quantitation; <LOQ = Detected; >ULOL = Above upper limit of linearity; CFU/g = Colony forming units per 1 gram; TNTC = Too numerous to count

CannaBusiness Laboratories
License # P-0059: (859)-514- 6999 <https://www.cannabusinesslabs.us>

This product has been tested by CannaBusiness Laboratories using validated testing methodologies and a quality system. Values reported relate only to the product tested. CannaBusiness Laboratories makes no claims as to the efficacy, safety, or other risks associated with any detected or non-detected levels of any compounds reported herein. This Certificate shall not be reproduced except in full, without the written permission of CannaBusiness Laboratories. Uncertainty information is available on request. Photo is of sample received by the lab and may vary from final packaging. The results apply to the sample as received. ISO/IEC 17025:2017 Accredited.