



Certificate of Analysis

Customer:
Pharm CBD
2580 Highway 42 West
Bedford, KY 40006

Sample ID: **210308005**
Order Number: **CB210308004**
Sample Name: **21032-1**

Collected Date:
Received Date: **3/8/2021**
COA Released: **3/10/2021**

External Sample ID:
Batch Number: **21032**
Product Type: **Concentrate**
Sample Type: **Concentrate**

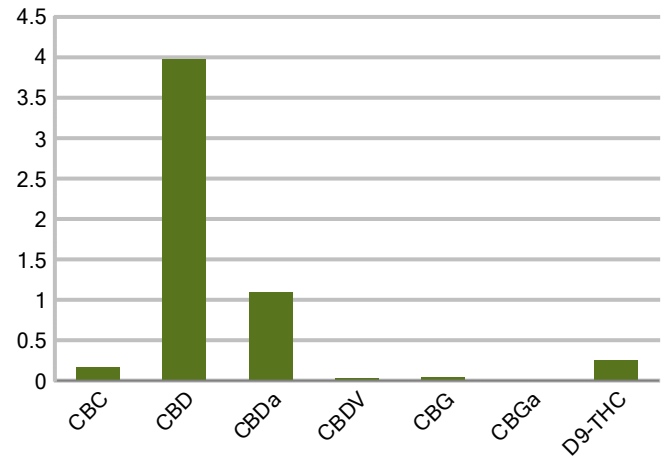
Comments:

CANNABINOID PROFILE

Analyte	LOQ (%)	% weight	mg/g
CBC	0.01	0.173	1.735
CBD	0.01	3.976	39.76
CBDa	0.01	1.096	10.96
CBDV	0.01	0.027	0.272
CBG	0.01	0.039	0.392
CBGa	0.01	0.011	0.112
CBN	0.01	ND	ND
d8-THC	0.01	ND	ND
d9-THC	0.01	0.258	2.577
THCa	0.01	ND	ND
Total Cannabinoids		5.580	55.80
Total Potential THC		0.258	2.577
Total Potential CBD		4.937	49.37
Total Potential CBG		0.049	0.491



Cannabinoids (% weight)



Ratio of Total Potential CBD to Total Potential THC 19.14 : 1

Ratio of Total Potential CBG to Total Potential THC 0.19 : 1

**Total Cannabinoids refers to the sum of all cannabinoids detected.*

**Total Potential CBD = (0.877 x CBDa) + CBD. *Total Potential THC = (0.877 x THCa) + THC. *Total Potential CBG = (0.877 x CBGa) + CBG.*

**Total Potential THC/CBD are calculated to take into account the loss of an acid group during decarboxylation.*



PJLA
Testing
Accreditation #109588

Authorized Signature

Laboratory Manager

Jamie Hobgood

03/10/2021 11:01 AM

DATE

This product has been tested by CannaBusiness Laboratories using validated testing methodologies and a quality system. Values reported relate only to the product tested. CannaB Laboratories makes no claims as to the efficacy, safety, or other risks associated with any detected or non-detected levels of any compounds reported herein. This Certificate shall not be reproduced except in full, without the written permission of CannaBusiness Laboratories. Uncertainty information is available on request. Photo is of sample received by the lab and may vary from final packaging. The results apply to the sample as received. ISO/IEC 17025:2017 Accredited.



CannaBusiness Laboratories, LLC
2554 Palumbo Dr. Lexington, KY 40509



Sample ID: 210308005
Sample Name: 21032-1
Sample Type: Concentrate

Certificate of Analysis

Customer

Pharm CBD
2580 Highway 42 West
Bedford, KY 40006



Overall Batch Results

Pesticide N/A	Moisture Content N/A
Potency PASS	Water Activity N/A
Mycotoxins N/A	Heavy Metals N/A
Microbial Screen N/A	Residual Solvents N/A
Terpenoids N/A	

Sample Name: 21032-1
Sample ID: 210308005
Product Type: Concentrate
Sample Type: Concentrate
Collected Date:
Received Date: 03/08/2021
Batch Number: 21032
Batch Size:
Sample Size:
COA released: 03/10/2021 11:01 AM

Potency (mg/g)

Date Tested: 03/10/2021

Method:

Instrument:

0.258 % Total THC	4.937 % Total CBD	5.580 % Total Cannabinoids	55.80 mg/g Total Cannabinoids
-----------------------------	-----------------------------	--------------------------------------	---

Analyte	Result	Units	LOQ	Result	Units
CBC (Cannabichromene)	0.173	%	0.010	1.735	mg/g
CBD (Cannabidiol)	3.976	%	0.010	39.76	mg/g
CBDa (Cannabidiolic Acid)	1.096	%	0.010	10.96	mg/g
CBDV (Cannabidivarin)	0.027	%	0.010	0.272	mg/g
CBG (Cannabigerol)	0.039	%	0.010	0.392	mg/g
CBGa (Cannabigerolic Acid)	0.011	%	0.010	0.112	mg/g
CBN (Cannabinol)	ND	%	0.010	ND	mg/g
D8-THC (D8-Tetrahydrocannabinol)	ND	%	0.010	ND	mg/g
D9-THC (D9-Tetrahydrocannabinol)	0.258	%	0.010	2.577	mg/g
THCa (Tetrahydrocannabinolic Acid)	ND	%	0.010	ND	mg/g



Authorized Signature

J. Hobgood
Laboratory Manager

Jamie Hobgood

03/10/2021 11:01 AM

Date Time

NT = Not tested, ND = Not detected; LOQ = Limit of Quantitation; <LOQ = Detected; >ULOL = Above upper limit of linearity; CFU/g = Colony forming units per 1 gram; TNTC = Too numerous to count

CannaBusiness Laboratories
License # P-0059: (859)-514- 6999 <https://www.cannabusinesslabs.us>

This product has been tested by CannaBusiness Laboratories using validated testing methodologies and a quality system. Values reported relate only to the product tested. CannaBusiness Laboratories makes no claims as to the efficacy, safety, or other risks associated with any detected or non-detected levels of any compounds reported herein. This Certificate shall not be reproduced except in full, without the written permission of CannaBusiness Laboratories. Uncertainty information is available on request. Photo is of sample received by the lab and may vary from final packaging. The results apply to the sample as received. ISO/IEC 17025:2017 Accredited.